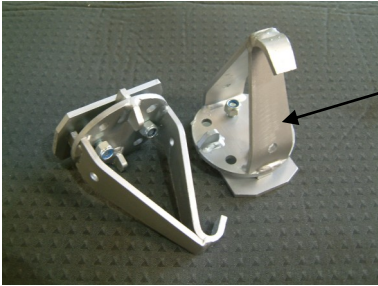


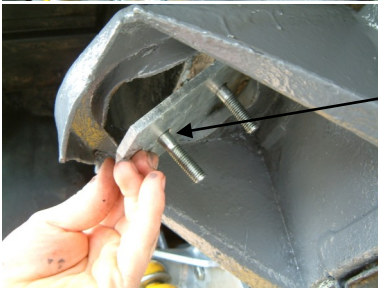
Fitment guide for rear spring re-locators



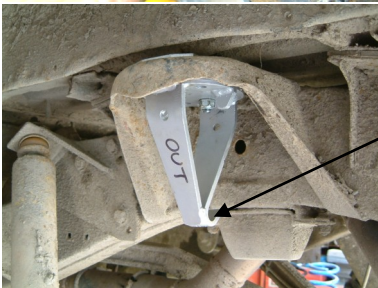
A pair of rear spring re-locators, top plates, 4 M10X45 and 4 nylock nuts.



Slide the re-locator top plate into place with the bolts facing down.



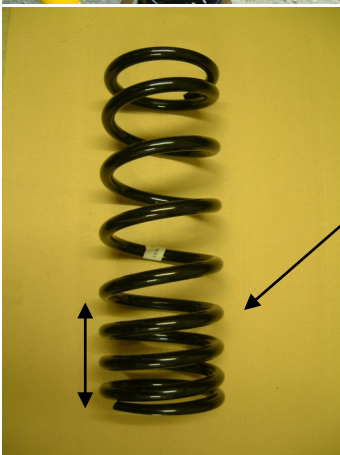
If fitting to a Discovery or a RRC place the retaining plate from underneath.



Lift the re-locator into place with the hook of the re-locator facing inwards. Tighten the bolts until the retaining plate is in contact with the re-locator and ensure that the re-locator is square in the spring seat.



When mounting the spring ensure that the re-locator hook catches the last full coil of the spring.



If a progressive spring is been used on the rear ensure that the coils closest together are at the bottom as this leaves more room for the hook of the re-locator to catch the spring. Ensure that the spring is secured firm, if the spring comes loose the spring turns and misses the hook on the re-locator.